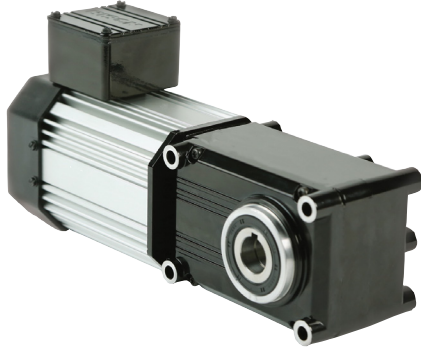


Maximum Efficiency Right-angle Gearmotors

725 230V Three-Phase Inverter Duty



PowerSTAR® 725 Series 230V three-phase right-angle inverter duty gearmotor offers up to 900 in-lbs of torque running continuously for reliable and energy efficient operation.

725 Series 3PH 230V Inverter Duty -TEFC*

Part Number	Speed (RPM)			Rated Torque (in-lbs)			Input HP	Gear Ratio	OHL (lbs)	Rated Current 230V (Amps)		
	6Hz	60Hz	90Hz	6Hz	60Hz	90Hz				6Hz	60Hz	90Hz
027-725G0010	17	168	252	60	60	40	1/5	10	355	1.2	1.1	.9
027-725G0015	11	112	168	90	90	60	1/5	15	400	1.2	1.1	.9
027-725G0020	8.4	84	126	120	120	80	1/5	20	430	1.2	1.1	.9
027-725G0030	5.6	56	84	180	180	120	1/5	30	470	1.2	1.1	.9
027-725G0040	4.2	42	63	240	240	160	1/5	40	510	1.2	1.1	.9
027-725G0050	3.4	34	50	300	300	200	1/5	50	550	1.2	1.1	.9
027-725G0060	2.8	28	42	360	360	240	1/5	60	580	1.2	1.1	.9
027-725G0080	2.1	21	31	480	480	320	1/5	80	620	1.2	1.1	.9
027-725G0100	1.7	17	25	380	380	253	1/8	100	740	.87	.85	.7
027-725G0120	1.4	14	21	450	450	300	1/8	120	780	.87	.85	.7
027-725G0150	1.1	11	17	570	570	380	1/8	150	820	.87	.85	.7
027-725G0180	0.9	9.3	14	680	680	453	1/8	180	870	.87	.85	.7
027-725G0240	0.7	7.0	10	900	900	600	1/8	240	940	.87	.85	.7

See accessories on page 17

